

## REC L



REC is a new architectural outdoor flood lighting series. 7 models fully customizable with multiple white and color variants, beam options, color finishes and accessories. All models are factory color calibrated for perfect consistency and can be monitored through our proprietary VMS (Virtual Monitoring System)

### OPTICS

LED	30pcs
Output(10 ° )	11804 lm (Quad) , 17600 lm (FW) , 13760 lm (TW)
Full White LED (FW)	2700K,3000K,3500K,4000K,4500K,5000K,5700K,6500K
Tuneable White LED (TW)	3000K-6500K
Multi Color	RGBW(Quad)
CRI(FW version)	80
LED life span	50,000hrs
Beam angle	10 ° , 15 ° , 20 ° , 25 ° , 30 ° , 40 ° , 60 ° , 10x40 ° , 40x10 ° , 60x30 ° , 30x60 ° , 60X10 ° , 10x60 ° , etc.
Dimming	linear 0-100%
Optional optical accessory	Barndoors(5.05.01.99.0487),Snoot(5.05.01.99.0486),Visor(5.05.01.99.0485),Honeycomb Louver(5.03.01.01.2143-A-N0)

### MECHANICS

Dimension	509x109x351 mm
Weight	13.38 kgs

Lens material	PMMA + anti-UV lens
Housing material	Anodized die-cast aluminum
Finish	gray(RAL9006), black(RAL9005)
Mounting	floor, ceiling or wall mounting (adjustable bracket)

#### ELECTRONICS

Power	320W
Power factor	>0.9,CCS auto calibrating
Components	integrated driver and power supply
Connector	8 pin power+DMX integrated cable + IP68 connector
Operating voltage	100 to 277 VAC, 50 / 60 Hz
Power supply	built-in
Optional electronic Accessory	Leader cable, extension cable, cable junction box, terminator cap

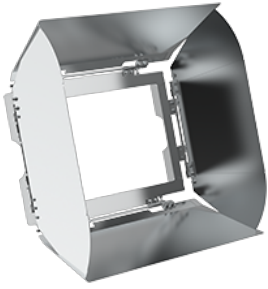
#### SOFTWARE

Control	DMX512 /RDM (wireless/DALI/ 0-10V available on request,optional for automatic address assignment)
DMX channel	4 chs (Quad), 1 ch (FW), 2 chs (TW)
VMS,CCS	optional

#### ENVIRONMENT

Ta	-20 to +45
Anti-condensation system	optional
Corrosion resistance	optional for marine environment
Passive cooling	Die-cast aluminum housing
Compliance	IK08 , IP66 , Class I
Certificate	CE, ROHS

#### OPTIONAL ACCESSORY



Barndoors(REC)



Snoot(REC)



Visor(REC)



Honeycomb Louvre



Cable Junction Box

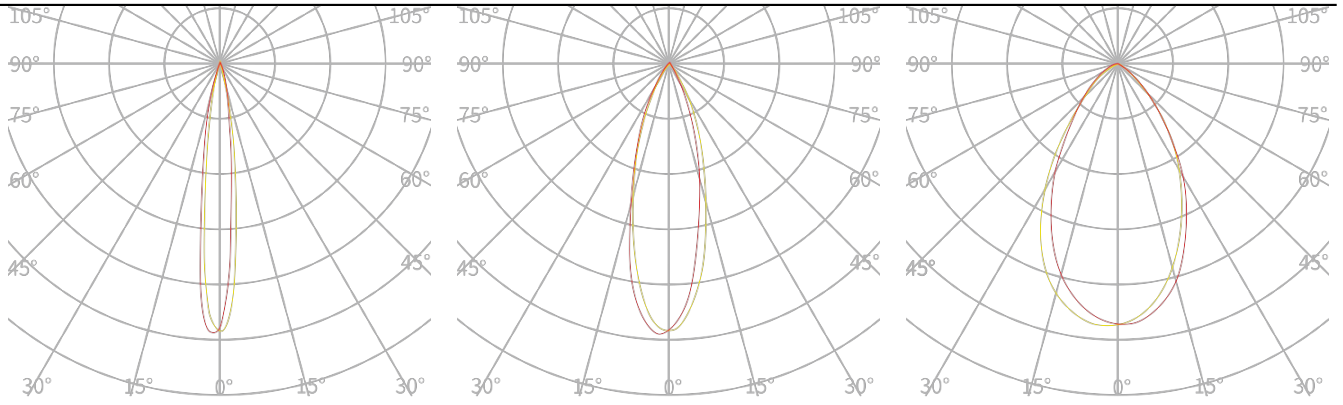


Plug



Leader cable

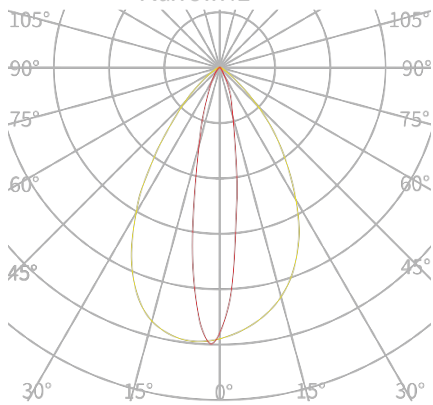
OPTICS ( Unit : cd/klm )



Narrow:12 °

FLOOD:30 °

WIDE:60 °



light shaping diffuser:20 ° × 65 °

PRODUCT DIMENSION

